

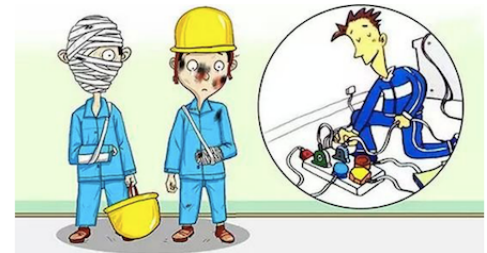
Potential Hazards of Electricity

- Hong Kong, 220 volts single phase or 380 volts three phase.
- Improper use of electrical installation or apparatus at this voltage is dangerous.
- Contact with live parts, can result in, burns or death;
- Damaged electrical installation or apparatus, overloaded power cords and short-circuited electrical appliances can cause fire;
- Sparks produced by electrical equipment or operating a switch near inflammable liquids or gases (paint spray rooms and LPG storage sheds), can ignite and lead to explosion and fire.



Risks in the Work Environment

- Damp or wet places, equipment not properly insulated and protected may become live. Make sure it's weatherproof.
- In areas full of unearthed metal parts such as metallic troughs, steel structures or container vessels the risk of electric shock is high
- Make sure it's installed and protected properly. Electric extension cords can be damaged easily. Extra care and attention to flexible power cords.



Safety At Work

- All electrical equipment should be regularly inspected, tested, repaired and maintained by competent persons. BYGO
- Report any damage or malfunctioning of the equipment;
- Stop operating the electrical equipment immediately and put up a warning sign to suspend its use. The equipment should then be inspected and repaired by a competent person;
- Cut off power supply or pull out the plug before cleaning or adjusting an electrical apparatus.



Electrical Safety

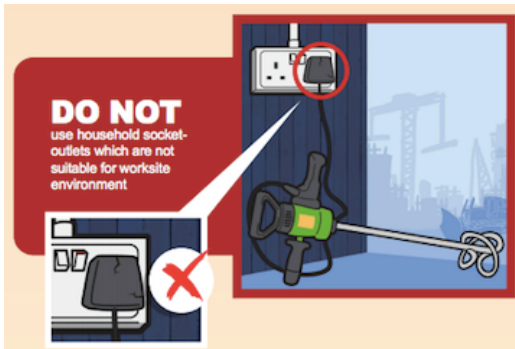


- INSPECT tools, power cords, and electrical fittings for damage. Repair or replace immediately.
- Tape cords to walls or floors. DO NOT use nails or staples.
- Use cords or equipment that is rated for the level of amperage or wattage that you are using.
- DO NOT replace a fuse with a larger size - can cause a fire.



DO NOT

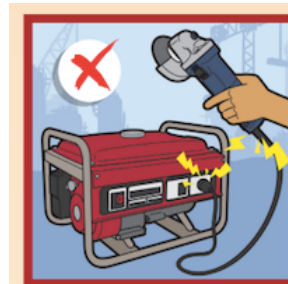
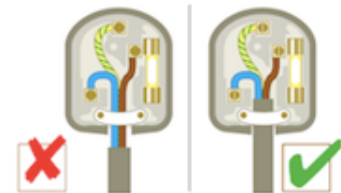
use a household plug for any of your hand-held tools as it is not designed for use in worksite environment



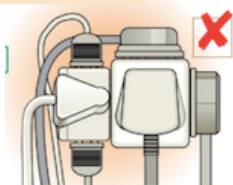
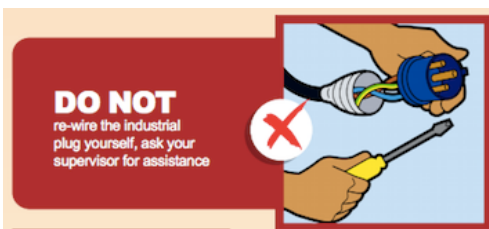
- Warm or hot outlets could be a sign it's unsafe. UNPLUG and do not use until a qualified electrician has checked the wiring.
- Only use LADDERS made of WOOD or other non-conductive materials.
- Place halogen lights away from combustible materials. Halogen lamps can become very hot and may be a fire hazard.



- Install Ground Fault Circuit Interrupters (GFCIs) in wet or damp areas.
- Make sure that exposed receptacle boxes are made of non-conductive materials.
- KNOW where the breakers and boxes are located.
- LABEL all circuit breakers and fuse boxes clearly.
- DO NOT USE outlets or cords that have exposed wiring.



It is dangerous to use a portable generator for any hand-held tool with a metallic casing



- DO NOT USE power tools with the guards removed.
- DO NOT BLOCK access to circuit breakers or fuse boxes.
- DO NOT TOUCH a person or electrical apparatus in the event of an electrical accident. Disconnect the current first.